

DSUB SV FE SSDP ANG73-284 15PPL2NUTM3

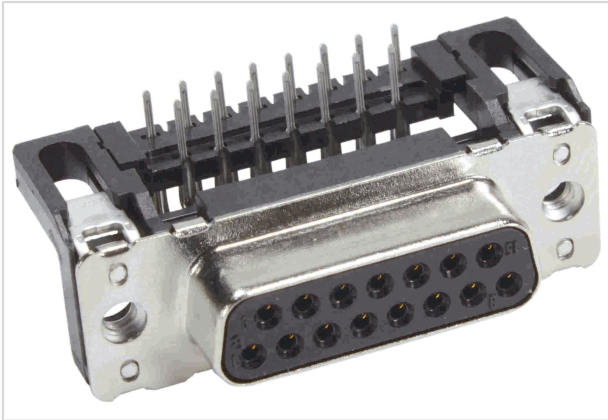


Image is for illustration purposes only. Please refer to product description.

Part number	09 66 213 6601
Specification	DSUB SV FE SSDP ANG73-284 15PPL2NUTM3
HARTING eCatalogue	https://b2b.harting.com/09662136601

Identification

Category	Connectors
Series	D-Sub
Identification	Standard
Element	Connector
Description of the contact	Stamped Angled

Version

Termination method	Wave soldering termination
Gender	Female
Size	D-Sub 2
Connection type	Motherboard to daughtercard
Number of contacts	15
Termination length	2.9 mm
Locking type	Fixing flange with thread M3

Technical characteristics

Distance between rows	2.84 mm
Contact spacing (termination side)	2.74 mm
Rated current	6.5 A
Clearance distance	≥1 mm
Creepage distance	≥1 mm
Insulation resistance	>10 ¹⁰ Ω



Pushing Performance
 Since 1945

Technical characteristics

Contact resistance	≤10 mΩ
Tightening torque	≤0.6 Nm Female screw lock
Limiting temperature	-55 ... +125 °C
Insertion force	≤50 N
Withdrawal force	≥4.5 N ≤33 N
Performance level	2 acc. to CECC 75301-802
Mating cycles	≥250
Test voltage $U_{r.m.s.}$	1 kV
Isolation group	IIIa ($175 \leq CTI < 400$)
PCB thickness	≥1.6 mm
Installation height	7.3 mm
Hot plugging	No

Material properties

Material (insert)	Thermoplastic resin, glass-fibre filled (PBTP) Shell: Plated steel
Colour (insert)	Black
Material (contacts)	Copper alloy
Surface (contacts)	Noble metal over Ni
Material flammability class acc. to UL 94	V-0
RoHS	compliant
ELV status	compliant
China RoHS	e
REACH Annex XVII substances	Not contained
REACH ANNEX XIV substances	Not contained
REACH SVHC substances	Not contained
California Proposition 65 substances	Yes
California Proposition 65 substances	Antimony trioxide Lead Nickel
Requirement set with Hazard Levels	R26



Pushing Performance
Since 1945

Specifications and approvals

Specifications	DIN 41652
UL / CSA	UL 1977 ECBT2.E102079

Commercial data

Packaging size	100
Net weight	10.72 g
Country of origin	Romania
European customs tariff number	85366990
GTIN	5713140081796
eCl@ss	27440214 D-Sub coupler